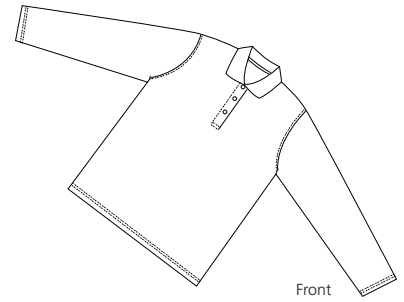
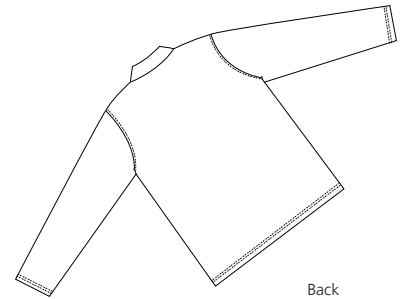


Ladies Silk Touch Long Sleeve Sport Shirt

PORT | AUTHORITY®



Front



Back

L500LS

- * 5-ounce * 65/35 poly/cotton pique * Flat knit collar and cuffs
- * Double-needle armholes and bottom hem * Side vents
- * 3-button placket with metal buttons with dyed-to-match plastic rims
- * Tailored for a traditional feminine fit * Reverse placket * Hemmed sleeves

Care Instructions:

Machine wash cold with like colors.
Do not bleach.
Tumble dry low.
Warm iron if necessary.

Finished Measurements in Inches

Size	XS	S	M	L	XL	XXL	Plus 1X	Plus 2X
Chest	19	20	21	22	23	24	27	29.5
Body	25.5	26	26.5	27	27.5	28	28.5	29
Sleeve	21.5	22	22.5	23	23.5	24	24	24.5

Chest width measured 1" below arm hole. Body length measured from high point shoulder seam to hem.
Sleeve length measured from shoulder seam to hem.

Colors

	Black
	Burgundy
	Navy
	Red
	Royal
	White

Color Chart

Colors	Black	Burgundy	Navy	Red	Royal	White
Textile PMS	19-4006TC	19-1617TC	19-3920TC	19-1764TC	19-4044TC	11-0601TC
General PMS	Process Black	505C	533C	187C	294C	No Match

Please Note:

Colors shown are approximate and for reference only. For closest match see PMS colors, or for exact match, returnable samples and grommeted samples are available.